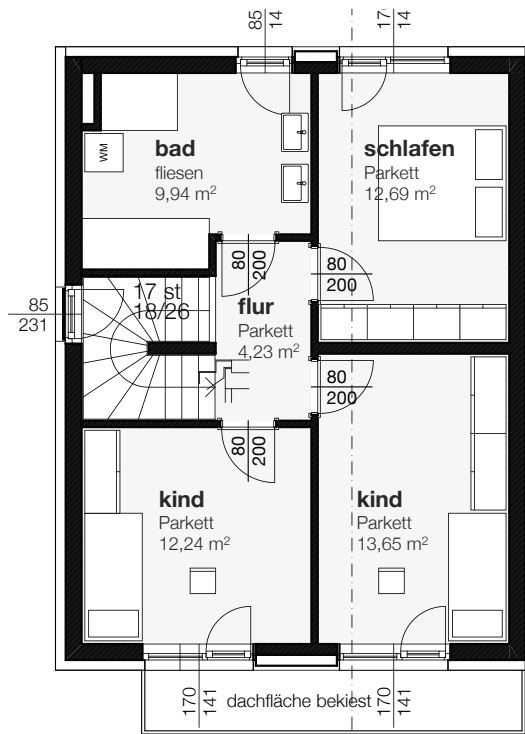
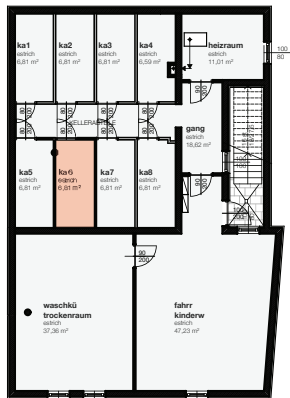


erdgeschoss



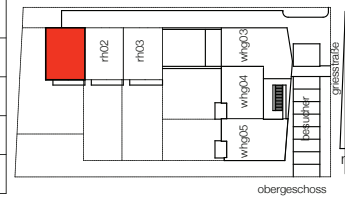
obergeschoss



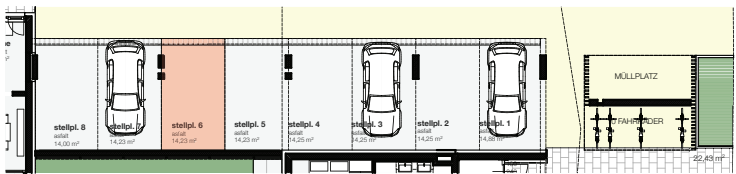
kellergeschoss



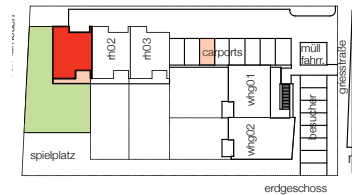
rh01
wohnfläche 98,78m2
kellerabteil 6,81m2
carport 14,23m2
garten 160,00m2
terrasse 11,35m2



obergeschoss



carports



erdgeschoss



VERKAUFSPLAN

Projekt:

Wohnungen u. Reihenhäuser
Vorchdorf

Ebene:

eg/1og

Top:

rh01

Maßstab:

om

Datum:

20.01.2020