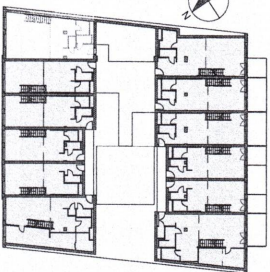
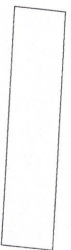


# Vorentwurf Wohnbau Pitkagasse 4, 1210 Wien

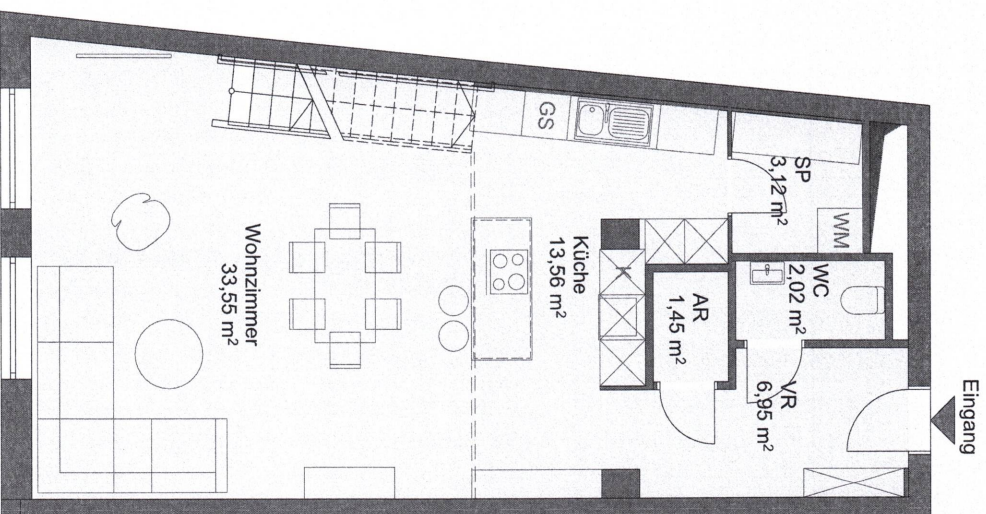


Lageplan  
1. Obergeschoss

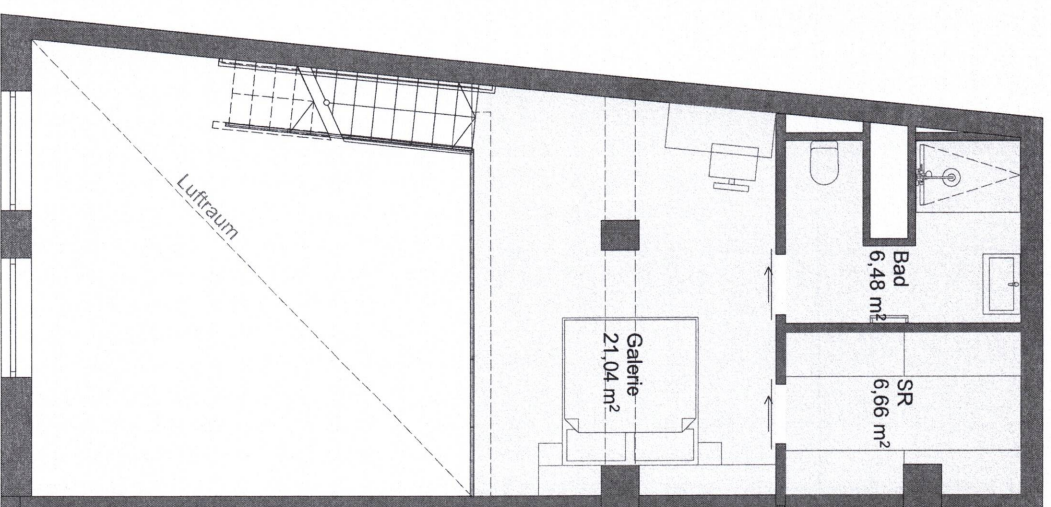
TOP 18

## Flächen

NGF: Wohnebene	ca. 60,60 m <sup>2</sup>
NGF: Galerie	ca. 34,10 m <sup>2</sup>
<b>NGF Summe:</b>	<b>ca. 94,70 m<sup>2</sup></b>



1. Obergeschoss



2. Obergeschoss/Galerie

<b>werkhof</b> Architekten		<b>Studie III</b> Wohnbau	
Werkhof Architekten ZT GmbH 1060 Wien, Linke Wienzeile 178/2/100 office@werkhof.cc +43 1 8905855 www.werkhofarchitekten.at		Projekt: Top 18	Pitkagasse 4, 1210 Wien M 1:100 GEZ.: OM, DS, ÖM 22.10.20