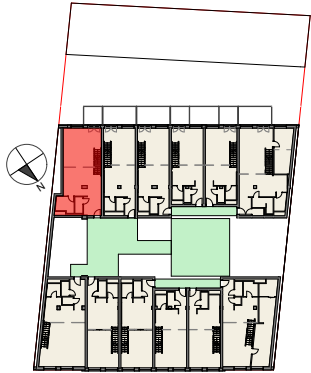


# Vorentwurf Wohnbau Pitkagasse 4, 1210 Wien



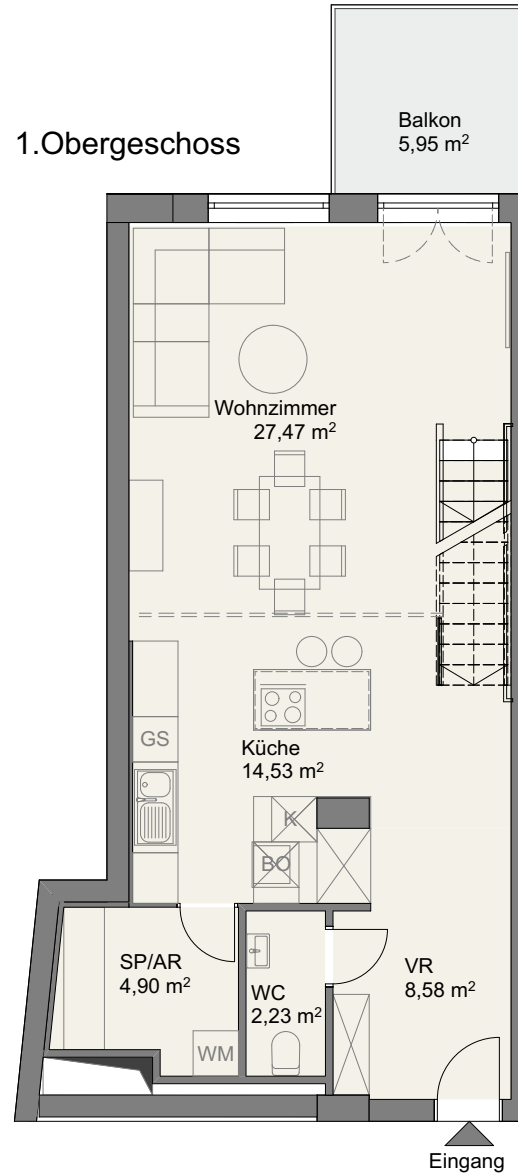
Lageplan  
1. Obergeschoss

## Top 12

### Flächen

|                   |                                |
|-------------------|--------------------------------|
| NGF: Wohnebene    | ca. 57,60 m <sup>2</sup>       |
| NGF: Galerie      | ca. 40,70 m <sup>2</sup>       |
| <b>NGF Summe:</b> | <b>ca. 98,30 m<sup>2</sup></b> |
| <br>              |                                |
| Balkon:           | ca. 5,90 m <sup>2</sup>        |

1. Obergeschoss



2. Obergeschoss/Galerie

